

THE 141st ANNUAL SESSION

July 27-Aug. 9, 2026

Rawlinsville Camp Meeting



Now to him who is able to do far more abundantly than all that we ask or think, according to the power at work within us, to him be glory in the church and in Christ Jesus throughout all generations, forever and ever. Amen.

Ephesians 3:20-21 ESV

475 Clearfield Road, Holtwood, PA 17532

Minutes from Route 272, 12 miles south of Lancaster, PA

Phone: 717-284-2746

www.rawlinsvillecamp.com

Spiritual Directors

Jared Schnapf, Executive Pastor of Ministry at Mission Church, will minister as the lead Spiritual Director.

Jared grew up at RCM and served as a youth leader for nine years. He and his wife, Jenn, have three children.

Jared earned his undergraduate degree from Millersville University and a master's degree from Temple and Cedarville Universities.

He has been on the staff at Mission Church for 15 years.

The Spiritual Directors' team, which is entering its fourth year, also includes:

■ The Rev. Adam Swift, who served the last two years as lead Spiritual Director.

Adam is the lead pastor of Grace Church at Willow Valley. He is a graduate of Lancaster Bible College and Grace Theological Seminary. He and his wife, Hannah, have two sons.

Adam will preach the Spiritual Life Rally at 7 p.m., Sunday, July 26.

■ Bryce Wendler, who served as a morning Bible study teacher last session, is the pastor of discipleship at Wesley Church in Quarryville.

For six years, Bryce was the pastor of Colerain Church under the umbrella of Wesley Church.

Bryce graduated from Liberty University in 2016 with a degree in Biblical studies.

He and his wife, Julie, have one son.



Jared Schnapf



Adam Swift



Bryce Wendler

Watch God work in amazing ways at RCM 2026

God is all powerful and is able to do far more than our finite minds would allow us to think or ask.

We know this to be true through the generations of testimonies of God's abundant work at Rawlinsville Camp Meeting.

Let us remember that God still can do more than we can think or ask.

Come to RCM 2026 with anticipation that God has a plan to be known and glorified.

God says He will be known through the generations, so let us take up the call to know God deeper and watch Him work in amazing ways.

**Rev. Jared Schnapf,
Executive Pastor of
Ministry, Mission Church
and RCM's Lead
Spiritual Director**

Cover photo

The children's march around has a long history at RCM. Camp photographer, Stephanie Reddinger, took this photo on the last Saturday of Camp last year.

Daily Schedule

MORNING

Praise and Prayer.....Tabernacle platform.....9 a.m.
Youth Get Up-N-Go Youth Tabernacle.....9:30 a.m.
Wake Up Your Faith, RCM 56 Kids (completed grades 5-6) in Bret Hershey Memorial Tabernacle, Monday-Friday, 9:30 a.m.; 10 a.m. service Saturdays.

The following services are at 10 a.m.

- Youth worship activities (completed grades 7-12) in Youth Tabernacle.
- Bible study in Tabernacle (see Page 6).
- Infant Nursery (unstaffed, Office, rear).
- Toddler Nursery (staffed, Cottage 43).
- RCM Preschool (ages 3-5) in Children's Building (second floor).
- RCM Kids (completed K-grade 4).....Children's Building (first floor).

LUNCH AND AFTERNOON

Dining room seating11:45 a.m. to 12:45 p.m.
Wednesday afternoons.....Missionary project (please see Page 4).....1:30 p.m.
Children's crafts ... (completed K-grade 1) ...Children's Building.....1:30 p.m.
Children's crafts ... (completed grades 2-4)...Children's Building.....2:30 p.m.
RCM 56 Kids (completed grades 5-6).....as per schedule.
Youth activities (completed grades 7-12).....as per schedule.

DINNER

Dining room seating4:45-6:15 p.m.

EVENING SERVICES

Quiet Bell(Please pause for prayer)6:15 p.m.
Prayer Meeting.....Office.....6:30 p.m.
Evangelistic service.....Tabernacle.....7:30 p.m.
 Infant Nursery..... (unstaffed, Office, rear).
 Toddler Nursery..... (unstaffed, Cottage 43).
 YES (Youth Evening Service)..... Youth Tabernacle.....7:30 p.m.
 (YES services to be held July 28-31 and Aug. 4-7. On the first Monday of Camp and weekend evenings, youth should attend Tabernacle service.)
 RCM Preschool (ages 3-5)Children's Building (second floor).
 RCM Kids (completed K-grade 4)Children's Building (first floor).
 RCM 56 Kids (completed grades 5-6) begins with YES Service, then to Bret Hershey Memorial Tabernacle for small groups.
Retiring bell11 p.m.

Sunday Schedule

MORNING

- Worship in the Tabernacle 10 a.m.
- Aug. 2 Rev. Bryce Wendler.
 - Aug. 9 Memorial Sunday with Rev. Mike Sigman.
- The Lord's Supper will be celebrated.
- Children's worship programs..... 10 a.m.
- Infant Nursery(unstaffed, Office, rear).
 - Toddler Nursery(staffed, Cottage 43).
 - RCM Preschool (ages 3-5).....Children's Building (second floor).
 - RCM Kids (completed K-grade 4).....Children's Building (first floor).
 - RCM 56 Kids (completed grades 5-6)attend main service.
 - Youth (completed grades 7 through 12)attend main service.

DINNER AND AFTERNOON

- Dining room seating 11:45 a.m.-12:45 p.m.
- Aug. 2, 3 p.m., Piercing Word, a theatrical ministry on the Gospel of Mark.
 - Aug. 9, 3 p.m., closing service of Camp in Tabernacle.

SUPPER AND EVENING (first Sunday)

- Dining room seating4:45-6:15 p.m.
- Quiet Bell(Please pause for prayer)6:15 p.m.
- Prayer meetingOffice.....6:30 p.m.
- Evangelistic ServiceTabernacle7:30 p.m.
- RCM Preschool.... (ages 3-5).....Children's Building (second floor)....7:30 p.m.
- RCM Kids (completed K-grade 4)....Children's Building (first floor)....7:30 p.m.
- Retiring bell.....11 p.m.

RCM volunteers take on missionary projects

Rawlinsville Camp Meeting will host two work projects on the Wednesday afternoons of Camp.

On Wednesday, July 29, starting at 1:30 p.m., volunteers will pack hygiene kits for Water Street Mission.

Tabetha Shilalo, from Unto, A CRU Ministry, will lead a LuoPads making ses-

sion at 1:30 p.m. Wednesday, Aug. 5.

LuoPads are reusable sanitary products sent to women in countries around the world. The pads are made from flannel sheets and terrycloth towels.

The location of the work will be announced during the Camp session.

A reminder

Evening services in the Tabernacle and youth programs end about 8:45 p.m.

The Snack Bar opens 10 minutes after the end of the service in the Tabernacle. The Snack Bar will close at 9:45 p.m.

Camp Evangelists

Rev. Rich Stevenson, July 27-Aug. 2

Rich Stevenson, who first preached at RCM on a Sunday evening in 1991 and has returned many times since, will be the evangelist for the first week of the 141st session.

Rich is the executive pastor of the Wesley Network in Quarryville, Pennsylvania. He is also executive director of The Malachi Network, a ministry that serves young leaders in missions and church planting.

Prior to his present ministry, Rich pastored



Rev. Rich Stevenson

in southern New Jersey; planted a church in Wilmore, Kentucky; established

a network of churches; and served as a professor at Asbury College and The International House of Prayer University in Kansas City, Missouri.

He also pastors the Avalon Beach Church in Avalon, New Jersey.

He graduated from Asbury College in 1984 with a B.A. degree in philosophy of religion; and Asbury Theological Seminary in 1987 with a master of divinity degree.

In 2010, Rich received an honorary doctor of divinity degree from Union Biblical Seminary in Yangon, Myanmar.

Rich and his wife, Tania, have two sons, two daughters and seven grandchildren.

Rev. Steve Lennox Aug. 3-8

Rev. Steve Lennox will make his first visit to Rawlinsville Camp Meeting as the evangelist for week two.

He is president emeritus of Kingswood University and serves as pastor of leadership development at Bethany Wesleyan Church, Cherryville, Pennsylvania.

Kingswood University, associated with the Wesleyan Church, is in Sussex, New Brunswick, Canada. Rev. Lennox served there from 2015 to 2025. Prior to assuming the presidency at



Rev. Steve Lennox

Kingswood, Rev. Lennox was honors professor of Bible and humanities at Indiana Wesleyan University for 22 years.

Before his time at Wesleyan, he served in pastoral ministry. Rev. Lennox's first church was Pine Grove Wesleyan Church, Pine Grove, Pennsylvania.

He earned Ph.D. and M.Phil. degrees from Drew University in New Jersey; an M.Div. from Evangelical Seminary in Myerstown, Pennsylvania; and a B.A. degree from Houghton University in New York.

Rev. Lennox said his life's purpose is to help people better understand and love the Scriptures.

He and his wife, Eileen, have two children and three grandchildren.

Bible Study Teachers

Sessions are held Monday through Saturday at 10 a.m. in the Tabernacle. There will not be a Bible study on Monday, July 27.

Rev. Jerry Lingenfelter: July 28-Aug. 1

This year's first-week Bible study teacher, Pastor Jerry Lingenfelter, is new to Rawlinsville Camp Meeting.

He moved to Lancaster to attend Lancaster Bible College. Following graduation, he served in various pastoral roles at Mission Church since 2001 and is now the senior pastor.

Pastor Jerry has



Rev. Jerry Lingenfelter

committed his life to serving in the local church and aims to multiply disciples to plant more

churches. He is known for his passion to preach God's Word with the goal of equipping people to "live loved and sent to the glory of God."

Having served in pastoral ministry for more than 25 years, he is engaged in training, coaching and consulting with pastors, churches and networks around the world.

Jerry is also chairman of the board for the Great Commission Collective.

He and his wife, Robyn, have four sons.

Pastor Jerry enjoys watching football, cheering for Penn State and the Pittsburgh Steelers, and doing CrossFit workouts.

Rev. Scott Phillips: Aug. 3-8

Scott Phillips, the second week Bible study teacher, serves as pastor of Andrews Bridge Christian Fellowship.

He was born and raised in the southern end of Lancaster County and has attended RCM his entire life.

Scott has been in pastoral ministry since 2013, and before that was a speaker and writer with House on the Rock Family Ministries.

He holds a master of divinity degree from Lancaster Bible College.

Scott and his wife, Mary, met while attending Shippensburg University.

They are parents of two sons and a daughter. Mary teaches math at Thaddeus Stevens College of Technology. The Phillips family lives in Witmer, Pennsylvania.

Scott was a Bible study teacher in 2023.



Rev. Scott Phillips

Weekend Activities

Saturday, Aug. 1

1-4 p.m. – Kids
Carnival around
the Tabernacle.
Lickity Split will
provide free ice
cream for all.



Sunday, Aug. 2

•3 p.m. –
Piercing Word,
a theatrical
ministry from
Akron,
will perform
the Gospel of
Mark in the Tabernacle.

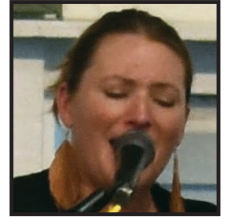


Saturday, Aug. 8

- 1 p.m. – Chris Ivey, shown
at right, a character juggler,
returns to Camp.
- 2 p.m. – Children's march
around and Camp birthday
party in back of the
Tabernacle.



Worship Leaders



Lindsay Graham,
above, will lead a
worship team from
Mission Church the
first week. **David
Julian**, below, will
lead a team the
second week from
Grace Church at
Willow Valley.



Alice Lauver will
be at the piano for
Sunday morn-
ing services and
the 3 p.m., Aug.
9 closing service.

Children's Ministry

By Kelli Eachus
Director
Children's Ministry

Since 2008, Rob and Kelli Eachus have directed the children's ministry at RCM. Supported by a dedicated volunteer team, Kelli leads the Nursery, Preschool, and RCM Kids, while Rob leads RCM 56 and oversees Youth Ministry. We appreciate your prayers for our team as these vital programs continue to grow.

Children and youth are expected to attend all services while on the grounds. Programs run concurrently with adult services (note: no afternoon preschool). Registration is required for all participants.

■ Fees: \$20 per week or \$30 for both weeks.

■ Discount: \$5 discount for families with multiple children.

■ Online Info: Visit www.rawlinvillecamp.com for forms, schedules, and payments.

NURSERY (ages 0–3)

■ Staffed: Available during 10 a.m. Bible Study and Sunday morning worship in the Eshelman Memorial Cottage (No. 43).

■ Unstaffed (service audio included) in the Mother's Room: rear of Office No. 27).

RCM PRESCHOOL & KIDS

The theme is, "NO EXCUSES." Morning lessons will focus on children of the Bible, Joseph and Daniel. We will explore how we are called, chosen and courageous. Evenings will include



Rob and Kelli Eachus

praise and worship, play time in the field, (elementary children go to the field; preschool children play inside) and focus on women from the Bible. They were called, chosen and courageous! Children can earn prizes for memorizing several Scripture verses.

PRESCHOOL (ages 3–5)

■ Location: Children's Building, 2nd Floor. Children must be potty trained.

MORNING PROGRAM

10 a.m.

■ RCM Preschool teacher: Vicki Aukamp.

■ RCM Kids (completed K-grade 4): Kollyne Srgo, Kari Greist, Trevor Seeley and Meg Adams.

AFTERNOON CRAFTS

No nursery or preschool available.

■ 1:30-2:30, for children who have completed K-1;

■ 2:30-3:30, for children who have completed grades 2-4.

All sessions are with Kim Deremer and helpers.

EVENING PROGRAM

7:30 p.m.

■ RCM Preschool – week 1, Kelly McCall; week 2, Leanne Burkholder.

■ RCM Kids – week 1, Kirsten Ditzler; week 2, Ashley Battillo and Matt Finch (week 1 and 2).



Camp scenes

RCM keeps children busy during its two-week session. Above, a large class works on crafts during an afternoon session.

At right, children head down the hill to the Tabernacle for their annual musical performance. The



performance will be held on the last Saturday. Photos were taken by Stephanie Reddinger.

Program Information for Camp

REGISTRATION is required for children and youth who participate in programs. Forms and information regarding fees may be obtained from the children and youth staff or online at www.rawlinsvillecamp.com.

A **MISSIONS OFFERING** will be received at the 10 a.m. service on Sunday, Aug. 2. The offering will be used for a missions project to be announced.

The **MEMORIAL SERVICE** will be held at 10 a.m., Sunday, Aug. 9. Flowers in memory of loved ones may be placed

during the Camp session.

Monetary contributions may be given in honor or memory of loved ones. Floral and monetary contributions must be received by 11 p.m., Sunday, Aug. 2, for listing in the memorial bulletin.

Give contributions to Sarah Johnson, Cottage 45, or Joyce Zercher, Cottage 11. (Please do not leave money if no one is there.)

ANNOINTING AND INTERCESSORY PRAYER may be requested through the Spiritual Directors.

RCM Youth and 56Kids! Ministry

By Rob Eachus

**Director, RCM 56 Kids!
and Youth Ministry**

The theme for the children and youth programs at RCM 2026 is “Winning... Victory in Jesus.”

The highlighted Scripture verse is 1 Corinthians 15:57, “*But thanks be to God, who gives us the victory through our Lord Jesus Christ.*” Our focus will be on what winning truly means when it comes to our salvation.

We will consider what trophy, what reward we will “win” and what legacy we will leave behind when we “finish the race” as described in 2 Timothy 4:7. By leaning into Jesus, we will persevere over any challenge, using it as an opportunity to be His witness.

The RCM 56 Kids! and Youth ministry programs are led by a team of staff who are strong believers, Christ followers, who continue to learn and grow in their own faith, wish to share their love of Jesus, and who love to interact with students.

RCM Youth and 56 Kids! are committed to the Gospel of Jesus Christ and to providing a fun and engaging program for our youth to learn and grow in their faith. During activities, friendships will be created, renewed and strengthened; relationships will be cemented in small groups. We will listen to the whisper of our God’s voice sound like a trumpet in our hearts.

The Youth program is open to students who have completed 7th through 12th grades. The 56 Kids! program is open to students who have completed 5th or 6th grade.

Students in both programs can expect daily sermons and worship, class discussions and small group conversations, as well as a variety of activities, on and off campus, that are designed to be fun, exciting and

challenging.

Registration is required to participate: \$30 per person for one week; \$50 for two weeks. There is a \$5 discount for each additional family member in the Youth program. Registration forms, schedule and additional information are available at www.rawlinsvillecamp.com.

Please be in prayer for RCM, for the saving grace of our Savior, Jesus, to be heartfelt and His gift of salvation to be accepted by many this summer. In the meantime, keep preparing, keep running, keep celebrating in His name, for His glory.

SCHEDULE

Youth are invited to “Get Up and Go!” and 56 Kids! to “Wake Up Our Faith!” weekdays at 9:30 a.m. for donuts, chocolate milk and juice.

Youth weekday schedule includes:

■ 10-11 a.m. - morning service, sharing testimonies, Scripture study and small groups.

■ 1:30 p.m. - afternoon activity, outside games, field trips and more.

■ 7:30 p.m. - Praise and worship (YES), evening service led by youth evangelists, plus scheduled activities both on and off campus.

56 Kids! weekday schedule includes:

■ 10-11 a.m. - ice breaker games, morning service, Scripture study.

■ 1:30 p.m. - afternoon activity, outside games, field trip.

■ 7:30 p.m. - Praise and worship (YES) with Youth, small groups, and scheduled on-campus activities.

There is an informal Saturday morning service at 10 a.m. for each program.

Questions?

Well, that’s great! Contact me at rkeachus@epix.net or 717-940-8736.

Rob Eachus aka “Mr. Rob”

RCM Association



Daphne Hathaway



Rob Eachus



Connie Howett



Erik Walter

PRESIDENT: Daphne Hathaway

VICE PRESIDENT: Rob Eachus

TREASURER: Connie Howett

SECRETARY: Erik Walter

ASSISTANT SECRETARY:

Mike Sigman

FINANCIAL SECRETARY:

Glenn McGaw

CORRESPONDING SECRETARY:

Michelle Henry

SPIRITUAL DIRECTORS:

Jared Schnapf (lead), Adam Swift and Bryce Wendler.

Following are directors by class:

2026

Ralph Huber, Kevin Johnson, John Price, Curt Stumpf, Connie Howett, Daphne Hathaway, Ron Metzler, Adam Markley and Lauren Hathaway.

2027

Dennis Brubaker, Barry Huber, Eric Rohrer, Mike Sigman, Erik Walter, Mark Weaver, Rod Smay, Meg Adams and Duane Wise.

2028

Rob Eachus, Glenn McGaw, Wayne Moore, Matthew Sichel, Rich Smith, Michelle Henry, Matt Finch, Bud Howett and John Lefever.

Honorary members

Melvin Boyce and Terry Hoffman

Spiritual Life Rally

The 141st session of RCM will be preceded at 7 p.m., Sunday, July 26, by the Spiritual Life Rally in the Tabernacle.

Rev. Adam Swift, a Camp Spiritual Director and lead pastor of Grace Church at Willow Valley, will preach at this year's rally.

The rally is organized by the Ladies Auxiliary.

Program Staff

RCM's coordinators are:

MISSIONS:

Ketrina Walter of Lancaster Alliance Church.

MUSIC:

Lindsey Graham, of Mission Church.

PRAYER:

Ashley Battillo of Grace Community Church of Willow Street.

Missionaries

First Week: Kendall Keeler of ServeNow

Our first week missionary is Kendall Keeler, who has lived and served in southern Lancaster County for more than 30 years.

He serves as the East Coast representative for ServeNow, a ministry in more than 30 countries and partnering with more than 20,000 churches worldwide.

Kendall raises funding to equip indigenous pastors with Bibles, bicycles and The Basic Series discipleship tools, while establishing training, tutoring centers and efforts to protect vulnerable women and children.

Kendall and his wife, Barbrea, have three daughters. Their son-in-law, Nathaniel Lacy, has been involved in Camp's youth ministry for several years. ServeNow's president, Ben Foley, surrendered to God's calling at Rawlinsville as a teenager.



Kendall Keeler

Second Week: Tami Shaub, Joyfully Made



Tami Shaub

Tami Shaub, director of the Joyfully Made Fellowship, will serve as missionary for the second week of Camp and will speak in an evening service.

Tami directs the fellowship, a non-profit, that found a home in the former Mount Hope UMC in Quarryville.

The congregation is made up of people with disabilities and special needs. More than 15 years ago, this special needs ministry was started at Wesley Church, Quarryville.

The church features Sunday worship from 8:30 a.m. to 12:30 p.m. and other activities during the week. The Sunday service allows parents to attend their own churches and then pick up their children. According to Tami, members of the group felt "when [they] were together as a group, they could just be themselves."

Tami continued, "We already see that our ministry is growing throughout our community and beyond. We hope to set a model for other churches and organizations to use as a template for creating more much-needed disability ministries."

Praise and Prayer

Praise and Prayer sessions are held at 9 a.m. in the Tabernacle.

The sessions emphasize prayer and singing and will be led by the Spiritual Directors.

Praise and Prayer will be held Tuesday-Friday the first week.

Second week, sessions will be held Monday-Friday.

Fall Fest

We return to Rawlinsville Camp on Friday and Saturday, Oct. 16-17, for a time of family fun and fellowship.

Friday night's activities include the grill with your favorite Camp foods, a bounce house, hayrides and games.

On Saturday, there will be a family scavenger hunt, lunch and the benefit auction.

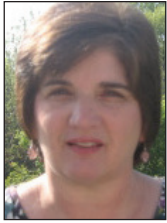
Details will be published in the fall newsletter, on the RCM website and through email.

Ladies Auxiliary

The purpose of the Auxiliary is to assist the Association in the furtherance of the Gospel.

This goal is met by hosting Fall Fest, accepting memorial and bake-less cake sale donations, and the annual fall soup sale.

Thanks to your generous support of these activities, this year the Ladies Auxiliary was able to



Diane Jacobs

donate \$18,000 to the operating budget of the Association; gift \$5,000 to missionaries; and make upgrades to the Boarding House dining room.

As we anticipate another Camp session, the Auxiliary looks forward to the fellowship that campers will enjoy over

deliciously prepared meals in the dining room.

Various churches and friends of RCM volunteer to provide lunch and dinner during the 14-day Camp session. Campers may “eat in” or “take out.”

We are always looking for volunteers to cook in the kitchen or help with serving. If you are over 16 years of age, please reach out to one of the Auxiliary co-presidents or vice presidents.

Co-presidents: Diane Jacobs and Sandy Lee;

Co-vice presidents: Alecia Walter and Donna Wendler.

Technology Team

Hooray, it’s Camp time again! The grounds are all spruced up; the Boarding House is getting a makeover, the Snack Bar is stocked, and more importantly, there is a full slate of spiritual feeding in store for everyone who shows up, from the youngest camper to the most “experienced.”

The tech team is ready once again to help make your worship experience the best it can be, whether you’re joining us in person or virtually.

If you don’t notice us, then we’re doing our job well in keeping the focus on the message instead of on the tech used to deliver it. In any case, please let us know if there is any way we can improve your RCM experience.

You may not notice any dramatic changes in Camp on the technical side this year, but that doesn’t mean we’ve been standing still. Old wiring has been replaced; new projectors are installed; lighting has been improved; and additions have been made to the tech team.

In case you missed the news last year, all evening services are livestreamed on YouTube as well as Facebook. All this so you can engage more easily and effectively with the folks leading us in worship across the campgrounds, and most importantly, connect with God.

Important links

Website: www.rawlinvillecamp.com

Facebook: www.facebook.com/RawlinvilleCampMeeting

Livestream:

Facebook: bit.ly/watchrcm or www.facebook.com/RawlinvilleCampMeeting/live

YouTube: www.youtube.com/@rawlinvillecampmeeting/streams

Want to be a part of the dynamic RCM tech team? Computer, sound and video operators are all needed for each evening service. If you have the expertise and are interested in helping, please contact Steve Quigg at captainquigg@comcast.net or text/call 732-252-3303.



Steve Quigg

Boarding House Information

Lunch and dinner are served in the dining room or from the takeout window of the Boarding House, which is operated by the RCM Association and the Ladies Auxiliary. Menus are available at the Boarding House ticket window.

Dining Room and takeout serving times:

The time for lunch is 11:45 a.m.-12:45 p.m.; dinner is 4:45 p.m.-6:15 p.m. The dining room will provide a cafeteria-style service. Takeout orders will be filled at the takeout window and include a drink and dessert.

Meal tickets can be purchased at the Boarding House. The cost of children's meals (ages 4-10) is \$3 for lunch and \$6 for dinner, half of the adult ticket price. Children up to 3 years of age eat for free.

Adult ticket prices are:

- Lunch, Monday-Saturday, \$6.
- Dinner, Monday-Saturday, \$12.
- Lunch, first Sunday, \$12 (children, \$6).
- Dinner, first Sunday, \$6.
- Lunch, last Sunday, \$6.

(An evening meal will not be served on the last Sunday of Camp.)

The Porch Snack Bar hours:

- Lunch, Monday-Saturday, 11:30 a.m.-1



Working in food service puts smiles on faces. Above, Sandy Sinclair, in kitchen; below, a Snack Bar crew.

p.m.

- Dinner, Monday-Saturday, 4:30 p.m.-6:30 p.m.

■Lunch, Sunday, from the conclusion of service until 1 p.m.

- Dinner on the first Sunday of Camp, 4:30 p.m.-6:30 p.m.

Each evening, 10 minutes following the conclusion of the evening service until 9:45 p.m.

The Boarding House closes following the noon meal on Sunday, Aug. 9, the last day of Camp.



General Information

Rawlinsville Camp Meeting is a 501(c3) organization as designated by the Internal Revenue Service. The Camp is not a stock concern and is governed by a self-perpetuating Board of Directors, consisting of 27 directors. It is maintained entirely by voluntary contributions.

All funds received by the Camp Meeting are used to improve the Camp facilities and grounds and provide for the Camp program and missionary outreach.

Rawlinsville Camp Meeting and its Ladies Auxiliary maintain year-round support of missionaries on home and foreign fields.

The Camp Meeting opens at 7:30 p.m., Monday, July 27, with the tolling of

the bell and closes Sunday, Aug. 9, with a one-hour service at 3 p.m., followed by the traditional walk around and the tolling of the bell. Please plan to stay for the closing.

Historic RCM photographs may be seen in the front room of the Office.

“Rawlinsville Ramblings” is the Camp newsletter. It is published quarterly and sent to all cottage-holders and other interested persons.

To receive the newsletter, please give your name and address to Michelle Henry, Cottage 90; email, pequeadear@aol.com; home address, 14 Clairmont Drive, Willow Street, Pa., 17584; phone, 717-209-0639.

Persons interested in renting cottages should contact Barry Huber, Cottage 4; 2841 Main St., Conestoga, PA 17516; bnhuber@verizon.net; cellphone, 717-951-7582; and home phone, 717-872-5633. There is a waiting list for cottages.

Camp Meeting Rules

Automobiles and motorcycles are not permitted in the cottage or camping areas. Bicycles, skateboards, roller blades, etc. are not permitted on the campgrounds.

People with physical disabilities can be transported by our golf carts. The carts are available at the Boarding House and the Tabernacle. On the last day of Camp, vehicles may enter the cottage areas one hour after the closing of Camp.

Televisions, radios and musical instruments are not permitted on the grounds. Musical instruments and audio visual equipment used in the ministry services are permitted. While the Camp does not prohibit the use of electronic devices on the grounds, the goal of the Camp is to be a retreat from the things of the world to focus on the things of the Lord. We encourage you to limit the use

of these devices as much as possible.

Alcoholic beverages are prohibited on the Camp grounds at all times. Smoking is not permitted anywhere on the Camp property. Failure to comply with these rules may lead to forfeiture of cottage-holder privileges.

Modesty in dress is encouraged as we seek to honor the Lord and respect our brothers and sisters in Christ.

Pets must be kept on leashes at all times and must be cleaned up after. Arrangements will be made to remove all stray animals to an animal shelter. We will ask that nuisance pets be removed.

No dogs are allowed to be walked within the circle during any type of service. Dogs are excluded from the Tabernacle at all times unless they are service dogs.

Cottage holders are responsible for the conduct of their families and guests. Young people under 18 staying overnight must be supervised by the cottage-holder adult(s).

Rawlinsville Camp Meeting

475 Clearfield Road,

Holtwood, PA 17532

NONPROFIT ORG.
U.S. POSTAGE
PAID
LANCASTER, PA
PERMIT NO. 1746

