

Rawlinsville Ramblings

Rawlinsville Camp Meeting

Praising the Lord in Song, Sermon and Service

SPRING 2024 Issue 98

INSIDE

New caretakers named for Rawlinsville Camp



Austin and Caroline Griffith will move to Camp with two daughters. Page 3

Evangelists named for 139th session



A new face and an old friend will fill the pulpit at this year's evangelistic services. Nick Spurgeon, first week, is the newcomer, while Tim Valentino is back to cover week two. Bible teachers are also announced. Page 4

Painting your cottage?

Scott Hoover gives advice on the way to paint your cottage the right way and the tool to use for scraping old paint. Page 5

Camp springs to life



Photos by Stephanie Reddinger

On a rainy Saturday, RCM photographer Stephanie Reddinger hiked around Camp looking for signs of life.

She found it in the blooming flowers.

Above, daffodils, heavy with rain, bloom in front of the tabernacle.

At right, daylilies sprout at the entrance to Camp.

Soon, work parties will begin to sprout around Camp.



DAPHNE HATHAWAY, ASSOCIATION PRESIDENT

The times they are a changin’

For such a time as this.

Since I became president of the Association in October, 2022, the Lord has brought this phrase to my mind multiple times.

As I attend evening services and youth praise and worship, look at the beauty and creativity of children’s crafts, interact with staff during our annual luncheon and prayer walk, and talk to cottage holders,



Daphne Hathaway

evangelists and missionaries, I am overwhelmed and humbled by the vital ministry that occurs every year at Camp under the Lord’s leading and by his Spirit!

We continue to be called to the transformative work of evangelism, discipleship, and equipping of the saints as we join together for 14 days in praise and prayer. And yet, the original church and societal structures that formed the basis of our Camp’s organization have changed substantially.

In 1886, 15 Methodist Episcopal churches from southern Lancaster County united to form an evangelical summer Camp Meeting. The Camp was directed by the managers of the Association, consisting of two laymen and a pastor from each



Photo by Stephanie Reddinger

More than half the cottages at RCM are occupied by people who do not attend the founding churches.

of the 15 churches.

The pastors often served during the session, one as evangelist, one as song leader, another as youth leader, etc.

Church members populated the tents, making the drive to Camp in their worsted wool and cotton clothing, leaving their gardens behind for two weeks and bringing provisions enough to last throughout the session.

They made the up to 15-mile drive one way with horses and wagons, and generally remained at Camp until the session ended.

As a child, my family and I made the trip to Camp one time and stayed for the duration, even though we only lived six miles away and owned two cars!

During my youth and childhood, and even in the 1980s during my terms as Ladies Auxiliary president, the meals in the Dining Room were provided by large volunteer teams from the (at that time) 14 United Methodist churches. When I saw cottage holders or the Snack Bar team, I knew the home churches of most of them.

Both society at large and the original United Methodist

churches have changed, and the original Camp governance structure is no longer sustainable.

Society has become more mobile. Younger generations have moved to other parts of the county, state, or even (gasp!) other states.

Cottages are passed down through generations of families whose members no long at-tend our founding churches.

Large churches have become popular and individuals are increasingly willing to drive outside of their neighborhoods to attend churches that more align with what they desire in fellowship and theology.

In addition, our founding churches continue to contract in size, with two of them (Mount Hope and Clearfield) closing in the last few years.

Others have Sunday morning attendances less than a quarter of what they had 35 years ago. A number of our churches have become so small that they are unable to staff and prepare a meal in the Dining Room, or don’t have the volunteer base to provide the entire meal. Well over half of our cottages are

now held by folks who attend churches other than our founding churches.

In addition to the decline in our founding churches, the division in the United Methodist denomination related to concerns such as the authority of Scripture, failure to adhere to the UMC Book of Discipline, disapproving conservative seminaries, and LGBTQ issues has resulted in six of our remaining founding churches voting to disaffiliate from the denomination while five have chosen to remain.

The potential for a theological divide provided another reason for reimagining how the Camp leadership structure could be designed to adapt to these changes while remaining faithful to the Camp’s traditional statement of faith.

In response to our changing demographic, the RCM Association has added ten members-at-large, directors who were not appointed by the founding United Methodist churches.

Beginning in the spring of 2023, the Association and the Executive Committee, with an attorney’s counsel, began working on proposed changes to the Articles of Incorporation and By-Laws that would create a leadership structure no longer dependent on the founding churches.

As a result of that work, the new governance structure was approved at the October meeting of the Association, resulting in a simplified board of directors comprising 27 members in three, three-year classes.

Please pray for the individuals who are committing their time and talents to provide leadership for the Camp. With a smaller group of directors, there will be an increased expectation of commitment from each of them to the activities of the Camp.

The new Articles of Incorporation and By-Laws have gone to print and you will receive a copy this summer.

Please pray faithfully that your leadership team will continue to humbly seek the Lord’s leading “for such a time as this.”

List of Association officers and members are on Page 3.

New caretakers coming to Camp

Austin and Caroline Griffith, who have two small daughters, are already serving regularly at RCM.

Beginning early this summer, we will have new caretakers at RCM.

After a selection process that was held over several weeks last fall, Austin and Caroline Griffith were offered the position, succeeding Derik and Jen Deibler, who have served as caretakers since 2015.

Caroline Griffith, the daughter of Camp president, Daphne Hathaway, grew up at Rawlinsville Camp and has attended Camp every year of her life.

Following her graduation from Penn Manor High School, Caroline attended the Restaurant School at Walnut Hill College in Philadelphia, where she graduated with a degree in culinary arts.

Caroline returned to Lancaster and worked as a chef at Lombardo's for two and a half years (she makes a great meatball, excellent vodka sauce and some amazing desserts!) and then directed food services at U-Gro Learning Center in Rohrerstown for a year and a half.

Caroline then worked for Milton Hershey Schools for the next two and a half years until she and Austin started a family. At Hershey, Caroline was part of a team of "white coats," formally trained chefs, who prepared lunch for 2,000 students each day and then prepared takeout dinners for 500-600 students and their house parents every evening.

Austin's family is from Texas, but he was born in Lancaster County and grew up in Farmersville and then Leola. He graduated from Conestoga Valley High School in 2011 and attended Thaddeus Stevens



Austin and Caroline Griffith with daughters, Eleanor Jo, left, 3, and Avery Elise, 2.

College of Technology, graduating in 2013 with a degree in carpentry.

While working in construction, a church friend recommended a sales position with Coca-Cola. Austin and Caroline met through a mutual friend who worked at a Darrenkamp's store, one of Austin's Coke accounts.

Following several years with Coca-Cola, Austin moved to Red Bull in a similar sales capacity. He now works as a regional merchandising manager for Red Bull and has responsibility for a territory that covers Harrisburg, Williamsport, Scranton and Allentown, supervising a team of 16. Born into a Christian family, camp ministry was also central to Austin's life. He served as a camp counselor at Camp Manatawny in Berks County from 2012-2022.

Austin and Caroline are the parents of Eleanor Jo (Ellie), 3, and Avery Elise, 2.

Austin and Caroline are looking forward to moving in at Camp, hopefully in May or June. Austin said, "We are excited for this new opportunity and can't wait to see what the Lord has in store for our family. We are eager to meet new people and watch our girls grow here."

Caroline shared that they are looking forward to giving back to Camp because it has done so much for others and their walk with the Lord. She has joined the Boarding House Committee and will be taking over the ordering function for that team, while Austin has put his skills to use helping to inspect cottages this spring.

The caretaker position was founded decades ago when the Camp recognized the benefit of having someone on the grounds fulltime to check for open doors and windows, signs of vandalism, downed limbs and trees, water leaks and to greet anyone who enters the grounds, especially out of season.

In addition to oversight of the grounds, the caretakers can also provide access to buildings as needed, support activities happening at Camp, receive deliveries, be available and participate in clean-up days, supply paint and shingles to cottage holders as needed, and check for phone messages over the winter.

Since the inception of the position, seven previous individuals or families have served as caretakers at RCM.

Please welcome Austin and Caroline and the girls when you see them on the grounds.

RCM Calendar

May 11

Spring cleanup day from 8 a.m. to finish.

July 11

Association meets at 7 p.m. in the Children's Building.

July 18

Ladies Auxiliary meets at 7 p.m. in the Children's Building.

July 20

Pre-Camp kitchen cleanup.

July 28

Spiritual life rally at 7 p.m. in the Tabernacle.

July 29-Aug. 11

139th session of Rawlinsville Camp Meeting.

Aug. 24

Post-Camp kitchen cleanup.

Sept. 24-27

West Lampeter Fair food stand.

Oct. 10

Fall Association's annual banquet at 6 p.m. followed by a 7 p.m. meeting in Boarding House.

Oct. 17

Ladies Auxiliary meeting at 7 p.m. in Children's Building

Oct. 18-19

Fall Fest.

Nov. 9

Fall cleanup day from 8 a.m. to finish.

Evangelists and Bible teachers named for RCM's 139th session

The Spiritual Directors have announced speakers for the upcoming Camp session.

Week one evangelist:

Making his first visit to RCM, Nick Spurgeon is a pastor at Parkside Church in Ohio.

A Louisiana native, he received his undergraduate degree in Christian Philosophy at Louisiana College and is currently finishing his Master of Divinity at Mid-western Theological Seminary.

At his church, he is responsible for support groups and missions.

Week two evangelist:

Pastor Tim Valentino returns to RCM for the fourth time as an evangelist.

Tim has served in pastoral ministry since 1992 and currently pastors Christ Community Church in Myerstown, Pa. He was a seminary professor for 17 years.

Week one Bible teacher:

Adam Swift has attended Rawlinsville Camp Meeting since he was a child.

Now the lead pastor at Grace Church at Willow Valley, he has an undergraduate degree in Biblical studies from Lancaster Bible College and a Masters degree in local church ministry from Grace Theological Seminary.

Week two Bible teacher:

Randy Gehman is the lead science teacher at Dayspring Christian Academy and has served in pastoral ministry.

He has studied the creation/evolution controversy extensively and will illustrate how the Bible and biology fit together, helping Christians to think biblically and recognize the accuracy of Scripture.

Wednesday afternoons:

This year there will be one afternoon service each week, to be held on the two Wednesdays of Camp. On the first Wednesday, Nick Spurgeon will give his testimony and the Spiritual Directors team will lead a panel discussion on "How to cultivate a devotional life."

The second Wednesday will feature camper testimonies and a Spiritual Directors panel discussion on "How to be more faithful in prayer."

Spiritual Life Rally:

Rev. Jared Schnapf, an associate pastor of Mission Church, will preach the Spiritual Life Rally in the Tabernacle at 7 p.m., Sunday, July 28.



Rev. Spurgeon



Rev. Valentino



Rev. Swift



Randy Gehman



Jared Schnapf



The Tech Team is hard at work during an evening service last session.

Tech Team wants you

The Tech Team, which oversees audio, streaming and projection services for our ministry teams during Camp, is in need of a few volunteers throughout the Camp session.

If you have experience working with these types of tech or are willing to learn and be part of an agile team,

please contact Steve Quigg at captainquigg@netzero.net to sign up.

New volunteers will need to attend a training session the week before Camp. Help is needed especially during the evening services, but also during Bible Study and Wednesday afternoon services.



In a dead stump, a weed takes refuge

Nature abhors a vacuum. Plants emerge wherever there is an open spot. And in spring, even the weeds can look pretty. RCM photographer, Stephanie Reddinger, took this shot of chickweed taking up residence in a rotting RCM stump.

How to properly prep and paint your cottage

Scott Hoover, professional painter and Rawlinsville Camp friend, offered his tips on how to best prepare and paint your cottage so that it looks great and so your time and effort will last for years.

“We paint for two reasons,” said Scott, “to maintain the clean, crisp appearance of our cottages and to protect the underlying wood.”

Scott says that thorough preparation is key for an overall good job. For scraping, Scott uses a 5-in-one tool (pictured at right), which is a paint scraper with a few extra surfaces. Here is his process:

- Begin by scraping all the loose paint on all the surfaces to be painted, using the tool edges to scrape grooves, but being careful not to damage the underlying wood.

Do you need paint or shingles? Camp provides them. Please call or text Caroline Griffith at 717-406-6722.

- Then sand all the surfaces you have scraped.
- After sanding, wipe the cottage down with a dry cloth to remove any sanded paint dust.
- Finally, apply paint. Scott uses brushes and rollers to apply paint. While he does sometimes have painting jobs for which he sprays paint, Scott finds it easier to roll and brush cabins.

- If you don’t scrape off the loose and peeling bits, new paint will soften and curl the loose bits while drying, which can result in an appearance that is worse than before painting.

Remember, Camp provides paint. Reach out to the caretakers in advance and they will put paint on your cabin porch the day before you plan to paint. Reseal and return leftover paint. Gray paint for door sills is also available.

Good luck, and happy painting!



Above, Holden Green paints a cottage last summer. Painting be-tween cottages can be a tight fit. At right, the tool Scott Hoover suggests you use for scraping paint

Clearfield UMC closes its doors

Another RCM founding church has closed, ending its long history.

Clearfield United Methodist Church’s small congregation could no longer maintain its building when it closed earlier this year.

Clearfield traces its beginnings to a Methodist Episcopal class that was held in the home of Robert Bruce and preached by a Rev.

Tolbert.

In 1835, five men, including Bruce, paid \$2 for a plot of land to build a church on Rawlinsville Road.

A stone building was opened in 1836. More land was purchased in 1853, and in 1876, the stone church was torn down and a new brick building was raised, the building that stands today.

Over the years, additions were made, including a covered entrance on the north side.



Rev. Tom Weeple was the last pastor to fill the pulpit at Clearfield.

According to RCM’s 100th anniversary book, the plans for Camp were made in a conference at

Clearfield in 1885.

A look at a cemetery list online shows a preponderance of Creamers, Millers and Drums buried in the adjoining cemetery.

At Clearfield UMC, the sign in glass above the front entrance still shows the early historic name of the denomination, Methodist Episcopal Church

Clearfield was the second RCM church to close its doors in the past few years.

Mount Hope UMC in Quarryville closed in 2022.

Cottage holder's responsibilities

Following is the Rawlinsville Camp Meeting cottage holder contract for 2024 and some practical interpretations (in red) of what you sign each year.

I agree to use the cottage at least 7 days during the Camp session.

(This does not mean coming to the grounds for dinner, visiting for a while at your cottage and then going home before or during the evening service. If you come to the grounds to eat or visit, it is expected that you will attend services as well. We have more than 100 families waiting for cottages who want to participate fully in the life of the Camp. Please prayerfully consider giving up your cottage if you are unable or uninterested in this level of commitment.)

I agree to attend services while on the grounds and ensure that my children and guests attend services as well.

(The expectation is that cottage holders and their guests attend services unless they have a compelling reason to be in their cottages while services are being held. For example, a mother of very young children might have to put them to bed during an evening service.)

I understand that I am responsible for the conduct of my guests and family members. I confirm that if children are staying at the cottage overnight, they will be supervised by an adult family member (21 years old) and that I, the cottage holder, will sleep overnight if any guests are staying.

I agree to support the camp financially after meeting my commitment to my local church.

I agree to maintain the cottage and understand that I will provide the labor for painting and roof repair (or pay the Association to have this done) in the year in which I am notified that it is necessary. I also agree to keep the roof and exterior of my cottage clean and free from algae. (Some cottage holders get repeat notices; please complete the work in the year notified.) All cottage repairs must be completed prior to returning the cottage to the Association.

I agree to make no modifications to the cottage without the advance approval of the Cottage/Grounds Committee. I understand that I may not modify the electrical service to the cottage. Cottages are wired with single 20-amp breakers. Any altering of the electrical supply to your cottage is prohibited. Any increase beyond



Photos by Stephanie Reddinger

Leaves form a “snake” at a fall cleanup. Cottage holders are expected to work spring and fall cleanups or pay a fee.

the single 20 amp breaker will result in the loss of your cottage.

(You may not replace windows, put on an addition, build a deck, or make any other changes without advance approval of the Building/Grounds Committee. Any changes must match the existing cottage in size, style, color, design, etc. and follow the Camp's construction standards. If you make changes that do not meet the standard, you will need to correct them at your expense.)

I am responsible to make sure that the smoke alarm is functioning each year.

I agree to participate annually in the cleanup of the grounds or understand that I will pay an annual maintenance fee as established by the Association.

I understand that I may not sublet my cottage to anyone. If I desire to sublet it, I will contact the Cottage Committee, which will arrange it to be sublet subject to the approval of the Executive Committee. I understand that if I sublet my cottage for two years, I will need to resume its full use in the third year or give it up.

I understand that I am responsible to maintain my current address with the Camp Meeting.

(We get rent invoices and newsletters returned regularly. Please update your information whenever there is a change!)

I understand that if I fail to follow these guidelines, I will lose rental rights to the cottage.

Association officers

President
Daphne Hathaway
Vice President
Ralph Huber
Treasurer
Connie Howett
Secretary
Erik Walter
Assistant Secretary Mike Sigman
Financial Secretary
Glenn McGaw
Corresponding Secretary
Michelle Henry
Lead Spiritual Director
Adam Swift

Following are directors by class

2024

Dennis Brubaker
Barry Huber
Eric Rohrer
Mike Sigman
Erik Walter
Mark Weaver
Rod Smay
Charlie Smith
Duane Wise

2025

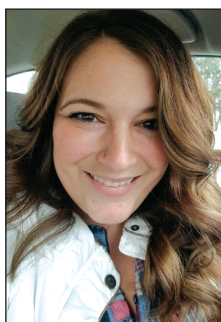
Rob Eachus
Glenn McGaw
Wayne Moore
Matthew Sichel
Rich Smith
Michelle Henry
Matt Finch
Jonathan Fry
Bud Howett

2026

Ralph Huber
Kevin Johnson
John Price
Curt Stumpf
Connie Howett
Daphne Hathaway
Ryan Phillips
Ron Metzler
Lauren Hathaway

RCM Ladies Auxiliary There's a job for you at RCM

The annual RCM candy egg sale was once again a huge success thanks to so many of you. We cannot thank you



Sarah Finch

enough. Whether you helped make the mixture, dipped the eggs, or bought and ate the delicious eggs, you helped make it a success.

If you couldn't help out with the egg sale, fear not! We have plenty of opportunities for you to become involved in the auxiliary and help us prepare for the upcoming Camp season.

We are looking for those of you who have the gift of hospitality and would be willing to help welcome our missionaries and speakers during Camp Meeting. If hospitality is your gift and you would like more information, please reach out to Sarah Finch, Diane Jacobs or Sandy Lee.

We are also looking for a few people who would like to plant some flower boxes.

We will have them set out at spring cleanup on May 11 for you to "adopt," or you can again reach out to Diane, Sandy, or me.

Here are some important dates for your calendar:

- Spring cleanup: May 11;
- Summer Ladies Auxiliary meeting: July 18;
- Pre-Camp kitchen cleanup: July 20;
- Post-Camp kitchen cleanup: Aug. 24.

We look forward to seeing you in the next few months as Camp approaches!

Sarah Finch is in her second year as president of the Auxiliary.

A SWEET JOB



On March 18 and 19, crews gathered at Mount Nebo UMC for the annual making of chocolate Easter eggs. Above, Marsha Wagner hefts a pan of chocolate off a stove. At right, peanut butter eggs are lined up waiting to be dipped in chocolate. Below, Cianni and Bella Wagner dip the eggs. Below, at right, the leader of the candy making, Karen McGaw, with her daughter, Kelly McCall.



Photos by Diane Jacobs

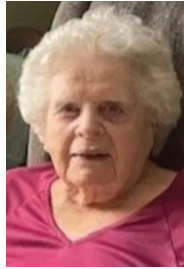
Obituaries

Mae Mussmon

Mae H. Mussmon, 97, of Millersville, died Jan. 24, 2024.

She was the wife of the late Rev. Robert S. Mussmon Sr., who passed away in 2014.

Mrs. Mussmon was a long-standing member of the Mt. Nebo United Methodist Church, where her late husband had pastored.



Mae Mussmon

Mrs. Mussmon was actively involved in supporting her husband's pastoral and evangelistic ministry as he pastored at Methodist churches in Lampeter, at Wesley in Strasburg, and Mt. Nebo, before he became an evangelist and the president of Total Evangelism

Associates.

Mrs. Mussmon was born in Gwynedd Valley, Pennsylvania, the daughter of the late Howard I. and Edla Brendle Hoisington.

Five children survive her: Robert S. Mussmon Jr. of Pequea; Jennifer L.M., wife of Dr. A. Gregory Stone of Chesapeake, Virginia; Jeffrey H., husband of Susan Shaub Mussmon of Pequea; Joan F. Mussmon of Millersville; and Rebecca S., wife of Paul Hann Jr. of Chambersburg.

She is survived by 12 grandchildren and 22 great-grandchildren. She was preceded in death by a great-grandson, Asher Hernandez; daughter-in-law, Linda Girvin Mussmon; brother, Irving H. Hoisington; and a sister, Emma F. Groff.

Services for Mrs. Mussmon were held at Mt. Nebo UMC with interment in the adjoining cemetery.

Contributions can be made to Operation Blessing (www.ob.org).

Rawlinsville Camp Meeting Association

CLEARFIELD ROAD,
HOLTWOOD, PA 17532

NONPROFIT ORG.
U.S. POSTAGE
PAID
LANCASTER, PA
PERMIT NO. 1746



Karen L. Fry

Karen Louise Fry, 82, of Lancaster, died on March 6, 2024.

Mrs. Fry was a long-time cottage holder. Her son, Jonathan, is a manager of the RCM Association, and her granddaughter, Justine, is a member of the youth staff.

Born in Newark, New Jersey, she was a daughter of the late Kurt W. Scholz Sr. and Louisa Scholz. Mrs. Fry was married to William C. Fry Sr., who died in 2016.

Mrs. Fry had a loving rela-



Karen L. Fry

tionship with her Lord and Savior, Jesus Christ. She grew up in Safe Harbor and was a lifelong member of Safe Harbor United Methodist Church.

She retired from Lancaster Office Equipment and Supply.

She is survived by her three children, William C. Fry Jr. (Lisa) of Manheim, Jonathan

Fry (Desa) of Millersville, and Barbara Schuetrumpf (Neil) of Lancaster.

Mrs. Fry deeply loved her five grandchildren, Garret Fry, Daniel Fry, Justine Fry, Emily Schuetrumpf and Neil Schuetrumpf Jr.

She was preceded in death by two brothers, Kurt W. Scholz Jr. and Ken W. Scholz.

A memorial service was held March 23 at Safe Harbor UMC.

Contributions can be made in Mrs. Fry's memory to the Safe Harbor UMC, 3687 River Road, Conestoga, Pennsylvania 17516.

Obituaries

Rawlinsville Ramblings will print obituaries for people who were associated with Camp.

Some individuals who pass on may have been associated and active with Camp, but have not been able to attend for years because of age or illness. We rely on you letting us know about those passings.

Length of the obituary may depend on how active the person had been at Camp.

Send suggestions to Marv Adams at daddysirme@comcast.net or notify a RCM officer. Adams can also be reached at 717-368-3461.